



CEILING TILE SUPPORTS

Replaces ordinary Ceiling Plates - Less Expensive to Install and a Tidier Design

Now there is no need to purchase a separate Ceiling Tile Plate* when used with any of our Plenum Rated Boxes

PLENUM RATED



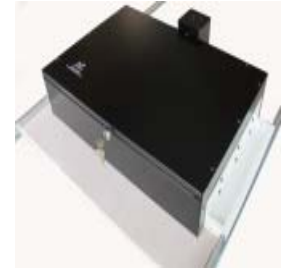
NB-CTSSPB
Ceiling Tile Supports



Standard Plenum Box with
NB-CTSSPB Ceiling Tile Supports



NB-CTSELB
Ceiling Tile Supports



Extra Size Plenum Equipment Box
with NB-CTSELB Ceiling Tile Supports

- Fits a Standard 2 ft Ceiling Grid Pattern
(When used with our Hanging Plenum Boxes)



Now the AC Receptacle is hidden inside the Plenum Box and all Cables including the Flex Cable to the Projector are run inside the Projector's Pipe

FASTER SIMPLER INSTALLATION



The Ceiling Tile Supports are attached in seconds to the Plenum Box with the supplied (6) Screws



Close Up of Ceiling Tile Support hooked on to the Ceiling Grid

A QUICKER, TIDIER AND LESS EXPENSIVE INSTALLATION METHOD

When installing any of our **PLENUM RATED** Equipment Boxes with our new Ceiling Tile Supports eliminates the need to use ordinary Ceiling Tile Plates such as a Chief CMA 440® as they add unnecessary Installation Costs and Exposure of the AC Receptacle and Flex Cable beneath the Ceiling.

The Picture shows a Hanging Version Plenum Equipment Box fitted with Ceiling Tile Supports tied to the Ceiling Grid Frame for improved stability of the Installation.

In these type of Installations, the Hanging Kit is usually attached to the Ceiling Tile Supports rather than the Hanging Plenum Box itself.

Although commonly called Hanging Plenum Boxes the Mount on the back allows the Box to be screwed to any Flat Surface. Hanging Plenum Boxes that need to be hung require that a Hanging Kit is used.

We recommend the use of The Ceiling Tile Supports when the Hanging Plenum Box is used in a Suspended mode as this will improve the stability of the installation.

All our Plenum Boxes have a "Knock Out" that allows a Projector Pole to be inserted to the underside. The Pole is secured to the underside using the Set of Pole Retaining Nuts that are included with each set of Ceiling Tile Supports.



NB-PLHK-5 or-15
Hanging Kit



Set of Retaining Nuts



NB-CTSSPB	Pr. Ceiling Tile Supports for Std. Plenum Equipment Box Requires NB-PLHK-5 Hanging Kit *See note below	\$149.95
NB-CTSELB	Pr. Ceiling Tile Supports for Extra Large Plenum Equipment Box Requires NB-PLHK-5 Hanging Kit *See note below	\$129.95
NB-PLHK-5	5' Hanging Kit for Standard or Extra Large Hanging Plenum Boxes	\$ 79.95
NB-PLHK-15	15' Hanging Kit for Standard or Extra Large Hanging Plenum Boxes	\$ 79.95

*Extra Hanging Kits are not required if already ordered with the Hanging Plenum Box

Products Proudly



Nigel B Design, Inc. CA, USA. Tel: (818) 487-9323 Fax: (818) 766-9805
Web Site: www.nigelbdesign.com. E-Mail: sales@nigelbdesign.com