

# Nigel B.

## DESIGN CATALOG JANUARY 2011

Products Proudly



3 Year Warranty



All our Amplifiers are Qualified to display the Energy Star® Logo by meeting strict Energy Efficient Guidelines set by the US Environmental Protection Agency and the US Department of Energy

*WE ARE PROUD TO BE PARTNERED WITH THE FOLLOWING MANUFACTURERS  
FOR CONTROL OF ALL OUR RS 232 AMPLIFIERS*



Nigel B Design, Inc. California, USA. Tel: (818) 487-9323 Fax: (818) 766-9805  
Web Site: [www.nigelbdesign.com](http://www.nigelbdesign.com) E-Mail: [sales@nigelbdesign.com](mailto:sales@nigelbdesign.com)



## AN IMPORTANT MESSAGE FROM NIGEL B DESIGN, INC

*I believe Good Functional Designs should never lack Innovative Thinking, or that Better Looking Products should limit the attention paid to the importance of making Installation Easier.*

I am often asked why our products are so innovative and better than most. It is not only the attention to detail, but having a group of loyal and very capable colleagues that I can trust, that contribute to the Innovation that I have become synonymous with.

**When I put my name on a Product it is because I believe it represents the best of the latest technology.**

All my products including our range of Miniature Amplifiers are made in the USA representing the latest energy efficient requirements, that is why we can display the Energy Star ® logo. I believe them to be the most efficient, a fact that **so far nobody has been able to equal.** Using a unique circuit design that I called ADC, reduces Standby Energy Consumption down to .025 of 1 Amp. With a Turn On time of 2 milliseconds so that no clipping of sound occurs at commencement.

Look for this Symbol on all our Amplifiers. It's your guarantee that our Amplifiers are the most Energy Efficient possible



### STATE OF THE ART MANUFACTURING & ASSEMBLY FACILITY

Our State of the Art Assembly Area allows me to confidently attach my name and stand by our Products with our "no quibble" THREE YEAR Guarantee.



Each Product is individually hand finished and tested before being handed over to Quality Control. This **ADDITIONAL** testing procedure involves more than 10 steps to complete and **NO** Amplifier is shipped unless these testing procedures are rigorously adhered to.

Nigel Brent, Designer and President



Products Proudly



**In this Day and Age, Energy Efficiency, Quality, and Made in America are what Nigel B Design is all about.**

Nigel B Design, Inc. CA, USA. Tel: (818) 487-9323 Fax: (818) 766-9805  
Web Site: [www.nigelbdesign.com](http://www.nigelbdesign.com) E-Mail: [sales@nigelbdesign.com](mailto:sales@nigelbdesign.com)



# GOING GREEN WITH NIGEL B DESIGN



**ALL NIGEL B AMPLIFIERS ARE ENERGY STAR QUALIFIED**

Our Energy Star Qualified Amplifiers save you money as they meet the strict Energy efficient guidelines set by the US Environmental Protection Agency and the US Department of Energy

## WHY NIGEL B DESIGN AMPLIFIERS ARE VERY EFFICIENT

The first thing you will notice is the absence of an On/Off Switch. This is no accident. By incorporating an Automatic On/Off Circuit which we call ADC, the need for a Power Switch becomes unnecessary.

**ADC is an Automatic Function that switches our Amplifiers On in 2 Milliseconds and Off within 15 seconds or continues to cycle the Amplifier's On condition while Audio is present**

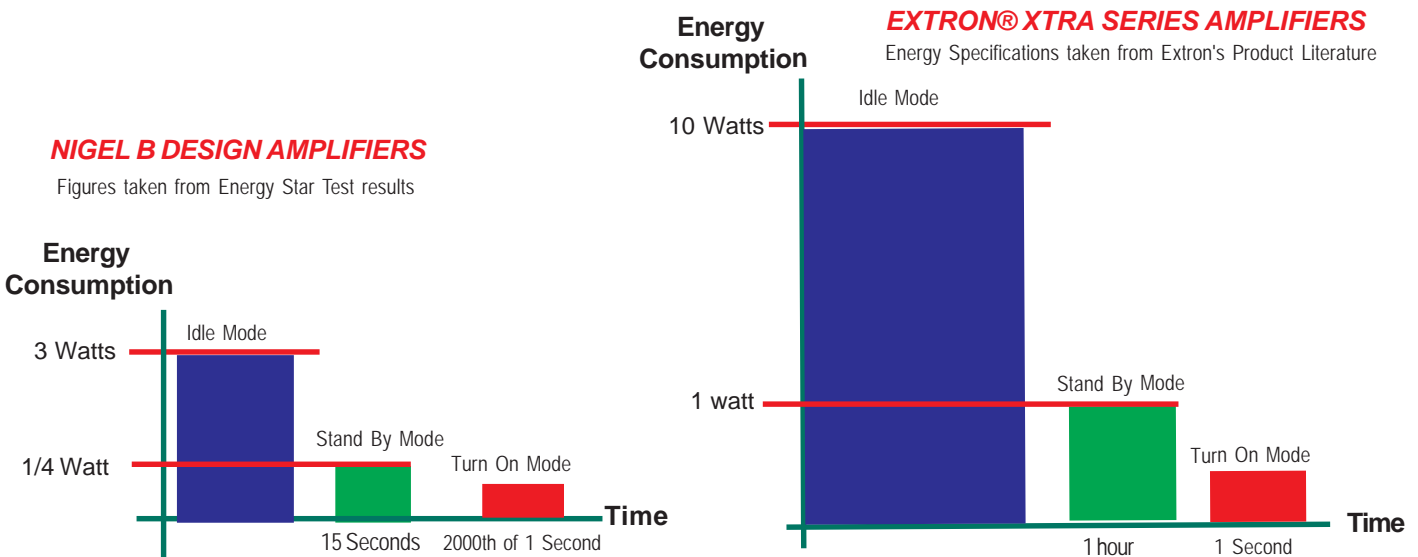


Automatic Detection Circuit

So if you are simply looking to gain **LEED Points** or just want to reduce Energy Costs - look no further. Nigel B Design's ADC Circuit make our Amplifiers most probably the most Energy Efficient around.

## COMPARE THE DIFFERENCE

We took one of the most popular Series of Amplifiers from Extron® to see how we compared, the results speak for themselves.



You will notice the "Turn On" time of 1 Second for Extron's Amplifiers will cause Sound Clipping, that is why Nigel B Amplifiers "Turn ON" time of 2000th of a seconds will always eliminate this annoyance.

Nigel B Design Amplifiers go from "in use" to Idle Mode in ONLY 15 seconds using 3 Watts or 3 BTUs. In Stand By mode consumption drops to 1/4 of a Watt.

Extron's Amplifiers take one Hour to go from "in use" to Idle Mode consuming 10 Watts or 34 BTUs of Energy. In Stand By Mode consumption drops to 1 Watt

## THE THOUGHT BEHIND NIGEL B DESIGN ENERGY EFFICIENT AMPLIFIERS

Five years ago I decided to make all my Amplifiers Energy Efficient, so I developed the Automatic ADC Circuit which is incorporated into my entire Product Line. Nigel B Design Amplifiers exceed the Energy Star specification requirements Version 2 for both Commercial and Residential Use. So, if you are looking for Energy Efficient Amplifiers, Nigel B Design's, Made in the USA Amplifiers should be your first Choice.

Designer, Nigel B Design, Inc

Products Proudly

All are available with Energy Efficient World Wide Auto Sensing 110-240v Power Supplies

We reserve the right to make Specification and Improvements without notice

Nigel B Design, Inc, 4163 St Clair Ave, Studio City, California, USA

e-mail: sales@nigelbdesign.com or Tel: (818) 487-9323





## REMOTELY CONTROLLED AMPLIFIER WALL PLATE COMBINATION

Hide this Amplifier behind a TV, in the Wall or above the Ceiling Tiles using our Plenum Boxes, in fact, in any place where it's not readily accessible

Control all its functions from the remotely installed Wall Plate using ordinary 8 Wire CAT 5 Cable fitted with standard RJ45 Plugs

Connection is simple and fast, usually taking only a few Minutes



No ON/OFF Switch Required



All our Amplifiers Switch On & Off Automatically



This Automatic On/Off function Greatly Contributes to its Energy Saving

No soldering, Special Tools, Complicated Connections or Wiring Knowledge Required



CONNECT YOUR I - POD®, MP3 PLAYER OR ANY AUDIO SOURCE DIRECTLY TO THE WALL PLATE

### BASED ON OUR 5000 SERIES AMPLIFIERS

This specially designed Amplifier is controlled using the supplied Remote Control Wall Plate that is installed in a standard 1 Gang Switch Box.

### EXTREMELY LOW OPERATING TEMPERATURE

Designed to run at up to 140 Degrees, the user will have no problem running these in most Installations. Their Built in Automatic Fans ensure the Amplifier's temperature will remain at approximately 85-90 Degrees Fahrenheit.



### AMPLIFIER SPECIFICATIONS

- \*50 or 90 Watts 4 Ohm Mono or Stereo
- \*25 or 45 Watts per Channel Stereo
- \*or 50/90 Watts Bridged Mono
- Balanced or Unbalanced Inputs (Preset during Installation)
- Optimized to drive Multiple Speakers
- \* 75/100 Watts Peak Music Power
- Frequency Response: 15 Hz - 22 kHz
- Signal to Noise Ratio: - 65 dB
- Total Harmonic Distortion: .003 dB
- Dynamic Range: 115 dB
- Overload Protection cuts in at 140 degrees with automatic Reset
- \* Depends on the Model Selected

### YOU BE THE JUDGE

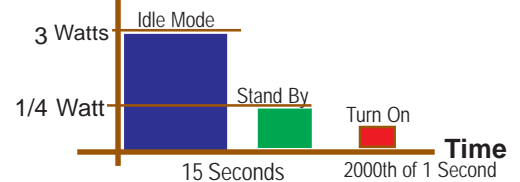
#### NIGEL B DESIGN ENERGY EFFICIENT AMPLIFIERS

Nigel B Design Amplifiers go from "in use" to Idle Mode in ONLY 15 seconds using 3 Watts or 3 BTUs. In Stand By mode consumption drops to 1/4 of 1 Watt.

Extron's Amplifiers take one Hour to go from "in use" to Idle Mode consuming 10 Watts or 34 BTUs of Energy. In Stand By Mode consumption drops to 1 Watt

Energy Specifications taken from Extron's Product Literature

Energy



Our proprietary ADC Circuit allows us to claim our Amplifiers are the most Energy Efficient Amplifiers on the Market

### RECOMMENDED POWER SUPPLY

Universal 100 V -240 V Auto Sensing  
24 V DC \*3.3 or 6.3 Amps Output  
Power Supplies are UL / CSA Listed  
\* Depends on the Model Selected

### DIMENSIONS

4.3" w, 4.5" d, 1.7" H  
Weight: 12 ozs

Products Proudly



NB-80050	8000 Series 50 watt Amplifier includes Remote Control Wall Plate	\$399.95
NB-PSU	24 Volt 3.3 Amps 100-240 V Power Supply for 50 Watt Amplifiers	\$ 79.95
NB-80090	8000 Series 90 watt Amplifier includes Remote Control Wall Plate	\$499.95
NB-PS170	24 Volt 6.3 Amps 110-240 V Power Supply for 90 Watt Amplifiers	\$119.95

Specification and Improvements are subject to change

Nigel B Design, Inc. California, USA. Tel: (818) 487-9323 Fax: (818) 766-9805  
Web Site: [www.nigelbdesign.com](http://www.nigelbdesign.com) E-Mail: [sales@nigelbdesign.com](mailto:sales@nigelbdesign.com)



# 50 WATT MONO

**5000 SERIES**

# STEREO AMPLIFIER



Measuring 4.3" Wide (1/4 of a Rack Space) their small size and light weight of 12 ozs allow you to conceal them in the tightest places

**3 Year Warranty**

**EACH MADE IN AMERICA AMPLIFIER IS INDIVIDUALLY TESTED**

## THE AMPLIFIERS SWITCH THEMSELVES ON & OFF AUTOMATICALLY

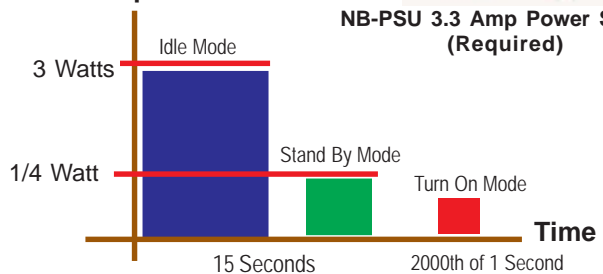
The first thing you will notice is the absence of an On/Off Switch. This is no accident. By incorporating an Automatic On/Off Circuit which we call ADC, the need for a Power Switch becomes unnecessary.

**ADC**

Our proprietary **ADC** Circuit allows us to claim our Amplifiers are the most Energy Efficient Amplifiers on the Market



## Energy Consumption



**NB-PSU 3.3 Amp Power Supply (Required)**

## OPTIONS THAT DEMONSTRATE THE VERSATILITY OF OUR AMPLIFIERS

The Automatic On/Off function of our Amplifiers allows them to be installed in any "out of the way" places, such as inside our Plenum Equipment Boxes.



1RU Rack Shelf / Frame Holds up to 4 Amplifiers



Multi Purpose Brackets Mounted on a Projector's Pole



Multi Purpose Bracket also allows our Amplifiers to be Mounted Vertically behind the back of a TV or Monitor



## AMPLIFIER SPECIFICATIONS

- 50 Watts 4 Ohm Mono or Stereo
- 25 Watts per Channel Stereo
- or 50 Watts Bridged Mono
- Bridged, Balanced or Unbalanced Inputs
- Optimized to drive Multiple Speakers
- 75 Watts Peak Music Power
- Frequency Response: 15 Hz - 22 kHz
- Signal to Noise Ratio: - 65 dB
- Total Harmonic Distortion: .003 dB
- Dynamic Range: 115 dB
- Overload Protection: Built In
- All Screw Connectors

## DIMENSIONS

4.3" w, 4.5" d, 1.7" H  
Weight: 12 ozs

## RECOMMENDED POWER SUPPLY

Universal 100 V -240 V Auto Sensing  
24 V DC 3.3 Amps Output  
Power Supply UL / CSA Listed  
Part # NB-PSU

## PLENUM RATED MOUNTING OPTIONS



Pole Mount Plenum Box



Extra Size Plenum Box with Rack Rails

**PLENUM RATED**

All our Plenum Mounting Options meet NEC, State and UL Requirements

CAD DFX DRAWING AVAILABLE

NB-50050	Mono/Stereo 50 Watts RMS Amplifier	\$ 299.95
NB-PSU	Power Supply 100V-240V Auto Sensing 24V DC 3.3 Amps	\$ 79.95

**Nigel B Design, Inc. California, USA. Tel: (818) 487-9323 Fax: (818) 766-9805**  
**Web Site: www.nigelbdesign.com E-Mail: sales@nigelbdesign.com**



# 90 WATT MONO

**5000 SERIES**

# STEREO AMPLIFIER



Measuring 4.3" Wide (1/4 of a Rack Space) their small size and light weight of 12 ozs allow you to conceal them in the tightest places

**3 Year Warranty**

**EACH MADE IN AMERICA AMPLIFIER IS INDIVIDUALLY TESTED**

MONO / STEREO BALANCED OR UNBALANCED INPUT



## THE AMPLIFIERS SWITCH THEMSELVES ON & OFF AUTOMATICALLY

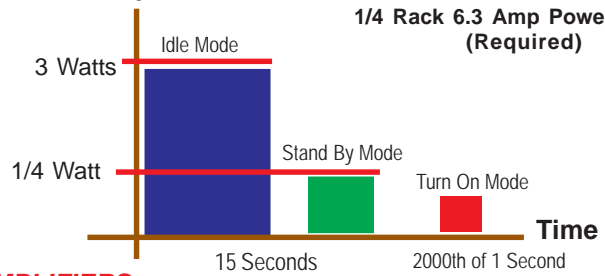
The first thing you will notice is the absence of an On/Off Switch. This is no accident. By incorporating an Automatic On/Off Circuit which we call ADC, the need for a Power Switch becomes unnecessary.



Our proprietary ADC Circuit allows us to claim our Amplifiers are the most Energy Efficient Amplifiers on the Market



## Energy Consumption



1/4 Rack 6.3 Amp Power Supply (Required)

## OPTIONS THAT DEMONSTRATE THE VESATILITY OF OUR AMPLIFIERS

The Automatic On/Off function of our Amplifiers allows them to be installed in any "out of the way" places, such as inside our Plenum Equipment Boxes.



1RU Rack Shelf / Frame Holds up to 4 Amplifiers



Multi Purpose Brackets Mounted on a Projector's Pole



Multi Purpose Bracket also allows our Amplifiers to be Mounted Vertically behind the back of a TV or Monitor



## AMPLIFIER SPECIFICATIONS

- 90 Watts 2 Ohm Mono or Stereo
- 45 Watts per Channel Stereo or 90 Watts Bridged Mono
- Bridged, Balanced or Unbalanced Inputs
- Optimized to drive Multiple Speakers
- 100 Watts Peak Music Power
- Frequency Response: 15 Hz - 22 kHz
- Signal to Noise Ratio: - 65 dB
- Total Harmonic Distortion: .003 dB
- Dynamic Range: 115 dB
- Overload Protection: Built In
- All Screw Connectors

## DIMENSIONS

4.3" w, 4.5" d, 1.7" H  
Weight: 20 ozs

## RECOMMENDED POWER SUPPLY

Universal 100 V -240 V Auto Sensing 24 V DC 6.3 Amps Output Power Supply UL / CSA Listed



CAD DFX DRAWING AVAILABLE

## PLENUM RATED MOUNTING OPTIONS



Pole Mount Plenum Box



Extra Size Plenum Box with Rack Rails

**PLENUM RATED**

All our Plenum Mounting Options meet NEC, State and UL Requirements

NB-50090	Mono/Stereo 90 Watts RMS Amplifier	\$ 449.95
NB-PS-170	Power Supply 100V-240V Auto Sensing 24V DC 6.3 Amps	\$ 119.95

Nigel B.

# 50 WATT MONO 5000 PL SERIES STEREO AMPLIFIER



RS 232 TWO WAY CONTROLLED BY  
CERTIFIED & TESTED BY



3 Year Warranty

EACH MADE IN AMERICA AMPLIFIER IS INDIVIDUALLY TESTED



MONO / STEREO BALANCED OR UNBALANCED INPUT

Products Proudly



NB-PSU 3.3 Amp Power Supply (Required)

## THE AMPLIFIERS SWITCH THEMSELVES ON & OFF AUTOMATICALLY

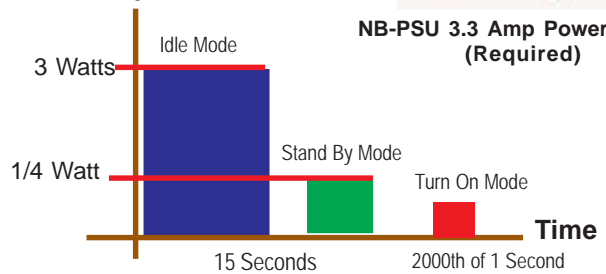
The first thing you will notice is the absence of an On/Off Switch. This is no accident. By incorporating an Automatic On/Off Circuit which we call ADC, the need for a Power Switch becomes unnecessary.

ADC

Our proprietary ADC Circuit allows us to claim our Amplifiers are the most Energy Efficient Amplifiers on the Market



## Energy Consumption



## OPTIONS THAT DEMONSTRATE THE VERSATILITY OF OUR AMPLIFIERS

The Automatic On/Off function of our Amplifiers allows them to be installed in any "out of the way" places, such as inside our Plenum Equipment Boxes.



1RU Rack Shelf / Frame Holds up to 4 Amplifiers



Multi Purpose Brackets Mounted on a Projector's Pole



Multi Purpose Bracket also allows our Amplifiers to be Mounted Vertically behind the back of a TV or Monitor



## AMPLIFIER SPECIFICATIONS

50 Watts into 4 Ohms Mono or Stereo  
25 Watts Bridged Mono  
Bridged, Balanced or Unbalanced Inputs  
Optimized to drive Multiple Speakers  
75 Watts Peak Music Power (Both channels)  
Frequency Response: 15 Hz - 22 kHz  
Signal to Noise Ratio: - 65 dB  
Total Harmonic Distortion: .003 dB  
Dynamic Range: 115 dB  
Overload Protection: Built In  
All Screw Connectors

## DIMENSIONS

4.3" w, 4.5" d, 1.7" H  
Weight: 12 ozs

## RECOMMENDED POWER SUPPLY

Universal 100 V -240 V Auto Sensing Input  
24 V DC 3.3 Amps Output UL/CSA Listed  
Part # NB-PSU



Pole Mount Plenum Box



Extra Size Plenum Box with Rack Rails

PLENUM RATED

All our Plenum Mounting Options meet NEC, State and UL Requirements



CAD DFX DRAWING AVAILABLE

NB-50050PL	50 Watt Mono / Stereo Amplifier with RS 232 Interface	\$499.95
NB-PSU	110 -240V Auto Sensing Power Supply 24 v 3.3 Amps DC	\$ 79.95

Nigel B Design, Inc. California, USA. Tel: (818) 487-9323 Fax: (818) 766-9805  
Web Site: www.nigelbdesign.com E-Mail: sales@nigelbdesign.com

Nigel B. DESIGN

# 90 WATT MONO 5000 PL SERIES STEREO AMPLIFIER

RS 232 TWO WAY CONTROLLED BY  
CERTIFIED & TESTED BY

MONO / STEREO BALANCED OR UNBALANCED INPUT



3 Year Warranty



EACH MADE IN AMERICA AMPLIFIER IS INDIVIDUALLY TESTED

Products Proudly



1/4 Rack 6.3 Amp Power Supply (Required)

## THE AMPLIFIERS SWITCH THEMSELVES ON & OFF AUTOMATICALLY

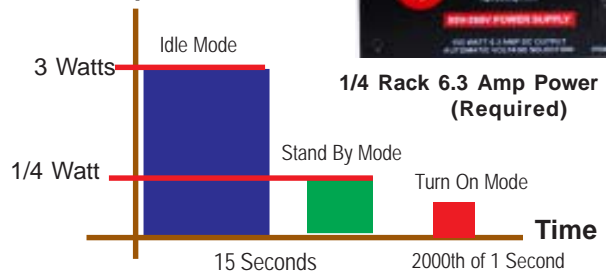
The first thing you will notice is the absence of an On/Off Switch. This is no accident. By incorporating an Automatic On/Off Circuit which we call ADC, the need for a Power Switch becomes unnecessary.

ADC

Our proprietary ADC Circuit allows us to claim our Amplifiers are the most Energy Efficient Amplifiers on the Market



## Energy Consumption



## OPTIONS THAT DEMONSTRATE THE VERSATILITY OF OUR AMPLIFIERS

The Automatic On/Off function of our Amplifiers allows them to be installed in any "out of the way" places, such as inside our Plenum Equipment Boxes.



1RU Rack Shelf / Frame Holds up to 4 Amplifiers



Multi Purpose Brackets Mounted on a Projector's Pole



Multi Purpose Bracket also allows our Amplifiers to be Mounted Vertically behind the back of a TV or Monitor



## AMPLIFIER SPECIFICATIONS

- 90 Watts into 2 Ohms Mono or Stereo
- 90 Watts Bridged Mono
- Balanced or Unbalanced Inputs
- Optimized to drive Multiple Speakers
- 100 Watts Peak Music Power (Both channels)
- Frequency Response: 15 Hz - 22 kHz
- Signal to Noise Ratio: - 65 dB
- Total Harmonic Distortion: .003 dB
- Dynamic Range: 115 dB
- Overload Protection: Built In
- All Screw Connectors

### DIMENSIONS

4.3" w, 4.5" d, 1.7" H  
Weight: 12 ozs

### RECOMMENDED POWER SUPPLY

Universal 100 V -240 V Auto Sensing Input  
24 V DC 6.3 Amps Output UL/CSA Listed

Part # NB-PS170

## PLENUM RATED MOUNTING OPTIONS



Pole Mount Plenum Box



Extra Size Plenum Box with Rack Rails

PLENUM RATED

All our Plenum Mounting Options meet NEC, State and UL Requirements

NB-50090PL	90 Watt Mono / Stereo Amplifier with RS 232 Interface	\$599.95
NB-PS170	110 -240V Auto Sensing Power Supply 24 v 6.3 Amps DC	\$119.95

CAD DFX DRAWING AVAILABLE

Nigel B Design, Inc. California, USA. Tel: (818) 487-9323 Fax: (818) 766-9805  
Web Site: www.nigelbdesign.com E-Mail: sales@nigelbdesign.com



70 / 25 VOLT

**7000 SERIES**  
Single or Dual Zone

50 WATT MONO / STEREO AMPLIFIER



Measuring 4.3" Wide (1/4 of a Rack Space) their small size and light weight of 12 ozs allow you to conceal them in the tightest places

**3 Year Warranty**

**EACH MADE IN AMERICA AMPLIFIER IS INDIVIDUALLY TESTED**

MONO / STEREO BALANCED OR UNBALANCED INPUT



Products Proudly



NB-PSU 3.3 Amp Power Supply (Required)

**THE AMPLIFIERS SWITCH THEMSELVES ON & OFF AUTOMATICALLY**

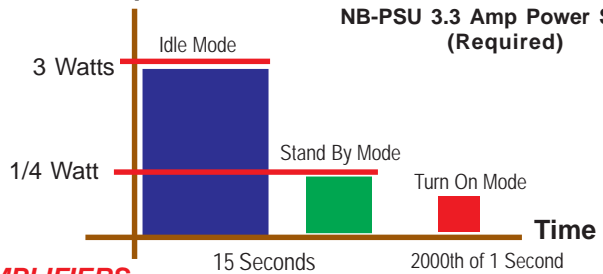
The first thing you will notice is the absence of an On/Off Switch. This is no accident. By incorporating an Automatic On/Off Circuit which we call ADC, the need for a Power Switch becomes unnecessary.

**ADC**

Our proprietary **ADC** Circuit allows us to claim our Amplifiers are the most Energy Efficient Amplifiers on the Market



**Energy Consumption**



**OPTIONS THAT DEMONSTRATE THE VESATILITY OF OUR AMPLIFIERS**

The Automatic On/Off function of our Amplifiers allows them to be installed in any "out of the way" places, such as inside our Plenum Equipment Boxes.



1RU Rack Shelf / Frame  
Holds up to 4 Amplifiers



Multi Purpose Brackets  
Mounted on a Projector's Pole



Multi Purpose Bracket also allows our Amplifiers to be Mounted Vertically behind the back of a TV or Monitor



**AMPLIFIER SPECIFICATIONS**

- 50 Watts Mono or Stereo (switchable) (See separate leaflet for 90 Watt Version) (25 Watts per Zone)
- 70 / 25 Volt Dual or Single Mode Input or Output
- Bridged, Balanced or Unbalanced Inputs
- Optimized to drive Multiple Speakers
- 75 Watts Peak Music Power (Both channels)
- Frequency Response: 15 Hz - 22 kHz
- Signal to Noise Ratio: - 65 dB
- Total Harmonic Distortion: .003 dB
- Dynamic Range: 115 dB
- Overload Protection: Built In
- All Screw Connectors

**DIMENSIONS**

4.3" w, 4.5" d, 1.7" H  
Weight: 12 ozs

**RECOMMENDED POWER SUPPLY**

Universal 100 V -240 V Auto Sensing Input  
24 V DC 3.3 Amps Output  
Power Supply UL / CSA Listed  
Part # NB-PSU

**PLENUM RATED MOUNTING OPTIONS**



Pole Mount Plenum Box



Extra Size Plenum Box  
with Rack Rails

**PLENUM RATED**

All our Plenum Mounting Options meet NEC, State and UL Requirements

CAD DFX DRAWING AVAILABLE

NB-70050	7000 Series 50 Watt 70 / 25 Volt Single/ Dual zone Mono / Stereo Amplifier	List Price \$ 399.95
NB-PSU	110- 240 V 3.3 Amp DC Power Supply.	List Price \$ 79.95



70 / 25 VOLT

### 7000 SERIES Single or Dual Zone

90 WATT MONO / STEREO AMPLIFIER



Measuring 4.3" Wide (1/4 of a Rack Space) their small size and light weight of 20 ozs allow you to conceal them in the tightest places

3 Year Warranty

EACH MADE IN AMERICA AMPLIFIER IS INDIVIDUALLY TESTED

MONO / STEREO BALANCED OR UNBALANCED INPUT



### THE AMPLIFIERS SWITCH THEMSELVES ON & OFF AUTOMATICALLY

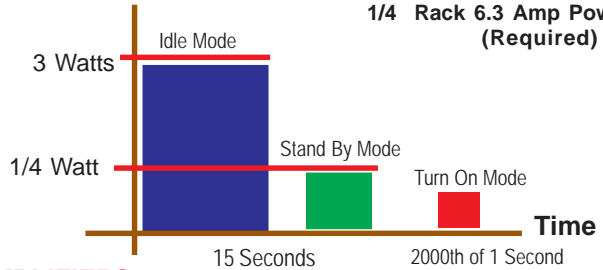
The first thing you will notice is the absence of an On/Off Switch. This is no accident. By incorporating an Automatic On/Off Circuit which we call ADC, the need for a Power Switch becomes unnecessary.



Our proprietary ADC Circuit allows us to claim our Amplifiers are the most Energy Efficient Amplifiers on the Market



### Energy Consumption



Products Proudly



1/4 Rack 6.3 Amp Power Supply (Required)

### OPTIONS THAT DEMONSTRATE THE VESATILITY OF OUR AMPLIFIERS

The Automatic On/Off function of our Amplifiers allows them to be installed in any "out of the way" places, such as inside our Plenum Equipment Boxes.



1RU Rack Shelf / Frame  
Holds up to 4 Amplifiers



Multi Purpose Brackets  
Mounted on a Projector's Pole



Multi Purpose Bracket also allows our Amplifiers to be Mounted Vertically behind the back of a TV or Monitor

### AMPLIFIER SPECIFICATIONS

- 90 Watts Mono or Stereo (switchable)
- (See separate leaflet for 90 Watt Version)
- (45 Watts per Zone)
- 70 / 25 Volt Dual or Single Mode Input or Output
- Bridged, Balanced or Unbalanced Inputs
- Optimized to drive Multiple Speakers
- 100 Watts Peak Music Power (Both channels)
- Frequency Response: 15 Hz - 22 kHz
- Signal to Noise Ratio: - 65 dB
- Total Harmonic Distortion: .003 dB
- Dynamic Range: 115 dB
- Overload Protection: Built In
- All Screw Connectors

### DIMENSIONS

4.3" w, 4.5" d, 1.7" H  
Weight: 20 ozs

### RECOMMENDED POWER SUPPLY

Universal 100 V -240 V Auto Sensing Input  
24 V DC 3.3 Amps Output  
Power Supply UL / CSA Listed  
Part # NB-PS170

### PLENUM RATED MOUNTING OPTIONS



Pole Mount Plenum Box



Extra Size Plenum Box  
with Rack Rails

PLENUM RATED

All our Plenum Mounting Options meet NEC, State and UL Requirements



NB-70090	7000 Series 90 Watt 70 / 25 Volt Single/ Dual zone Mono / Stereo Amplifier	List Price \$599.95
NB-PS170	110- 240 V 6.3 Amp DC Power Supply.	List Price \$119.95

Nigel B Design, Inc. California, USA. Tel: (818) 487-9323 Fax: (818) 766-9805  
Web Site: www.nigelbdesign.com E-Mail: sales@nigelbdesign.com



70 / 25 VOLT

**7000 SERIES**  
Single or Dual Zone

50 WATT MONO / STEREO AMPLIFIER



Measuring 4.3" Wide (1/4 of a Rack Space) their small size and light weight of 12 ozs allow you to conceal them in the tightest places

**3 Year Warranty**

**EACH MADE IN AMERICA AMPLIFIER IS INDIVIDUALLY TESTED**

MONO / STEREO BALANCED OR UNBALANCED INPUT



**THE AMPLIFIERS SWITCH THEMSELVES ON & OFF AUTOMATICALLY**

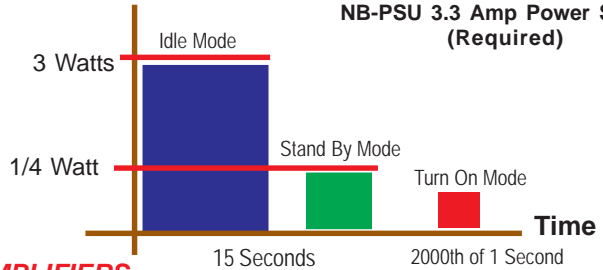
The first thing you will notice is the absence of an On/Off Switch. This is no accident. By incorporating an Automatic On/Off Circuit which we call ADC, the need for a Power Switch becomes unnecessary.

**ADC**

Our proprietary **ADC** Circuit allows us to claim our Amplifiers are the most Energy Efficient Amplifiers on the Market



**Energy Consumption**



NB-PSU 3.3 Amp Power Supply (Required)

**OPTIONS THAT DEMONSTRATE THE VESATILITY OF OUR AMPLIFIERS**

The Automatic On/Off function of our Amplifiers allows them to be installed in any "out of the way" places, such as inside our Plenum Equipment Boxes.



1RU Rack Shelf / Frame  
Holds up to 4 Amplifiers



Multi Purpose Brackets  
Mounted on a Projector's Pole



Multi Purpose Bracket also allows our Amplifiers to be Mounted Vertically behind the back of a TV or Monitor



**AMPLIFIER SPECIFICATIONS**

- 50 Watts Mono or Stereo (switchable) (See separate leaflet for 90 Watt Version) (25 Watts per Zone)
- 70 / 25 Volt Dual or Single Mode Input or Output
- Bridged, Balanced or Unbalanced Inputs
- Optimized to drive Multiple Speakers
- 75 Watts Peak Music Power (Both channels)
- Frequency Response: 15 Hz - 22 kHz
- Signal to Noise Ratio: - 65 dB
- Total Harmonic Distortion: .003 dB
- Dynamic Range: 115 dB
- Overload Protection: Built In
- All Screw Connectors

**DIMENSIONS**

4.3" w, 4.5" d, 1.7" H  
Weight: 12 ozs

**RECOMMENDED POWER SUPPLY**

Universal 100 V -240 V Auto Sensing Input  
24 V DC 3.3 Amps Output  
Power Supply UL / CSA Listed  
Part # NB-PSU

**PLENUM RATED MOUNTING OPTIONS**



Pole Mount Plenum Box



Extra Size Plenum Box  
with Rack Rails

**PLENUM RATED**

All our Plenum Mounting Options meet NEC, State and UL Requirements

CAD DFX DRAWING AVAILABLE

NB-70050	7000 Series 50 Watt 70 / 25 Volt Single/ Dual zone Mono / Stereo Amplifier	List Price \$ 399.95
NB-PSU	110- 240 V 3.3 Amp DC Power Supply.	List Price \$ 79.95

Nigel B Design, Inc. California, USA. Tel: (818) 487-9323 Fax: (818) 766-9805  
Web Site: www.nigelbdesign.com E-Mail: sales@nigelbdesign.com



70 / 25 VOLT

### 7000 SERIES Single or Dual Zone

90 WATT MONO / STEREO AMPLIFIER



Measuring 4.3" Wide (1/4 of a Rack Space) their small size and light weight of 20 ozs allow you to conceal them in the tightest places

3 Year Warranty

EACH MADE IN AMERICA AMPLIFIER IS INDIVIDUALLY TESTED

MONO / STEREO BALANCED OR UNBALANCED INPUT



### THE AMPLIFIERS SWITCH THEMSELVES ON & OFF AUTOMATICALLY

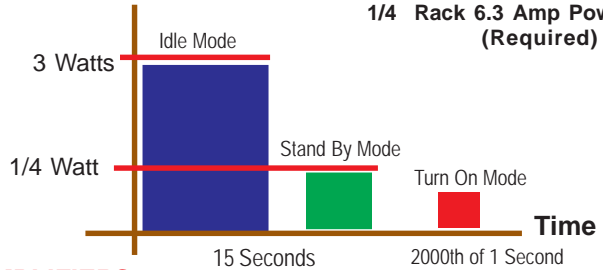
The first thing you will notice is the absence of an On/Off Switch. This is no accident. By incorporating an Automatic On/Off Circuit which we call ADC, the need for a Power Switch becomes unnecessary.



Our proprietary ADC Circuit allows us to claim our Amplifiers are the most Energy Efficient Amplifiers on the Market



### Energy Consumption



1/4 Rack 6.3 Amp Power Supply (Required)

### OPTIONS THAT DEMONSTRATE THE VESATILITY OF OUR AMPLIFIERS

The Automatic On/Off function of our Amplifiers allows them to be installed in any "out of the way" places, such as inside our Plenum Equipment Boxes.



1RU Rack Shelf / Frame Holds up to 4 Amplifiers



Multi Purpose Brackets Mounted on a Projector's Pole



Multi Purpose Bracket also allows our Amplifiers to be Mounted Vertically behind the back of a TV or Monitor

### AMPLIFIER SPECIFICATIONS

- 90 Watts Mono or Stereo (switchable) (See separate leaflet for 90 Watt Version) (45 Watts per Zone)
- 70 / 25 Volt Dual or Single Mode Input or Output
- Bridged, Balanced or Unbalanced Inputs
- Optimized to drive Multiple Speakers
- 100 Watts Peak Music Power (Both channels)
- Frequency Response: 15 Hz - 22 kHz
- Signal to Noise Ratio: - 65 dB
- Total Harmonic Distortion: .003 dB
- Dynamic Range: 115 dB
- Overload Protection: Built In
- All Screw Connectors

### DIMENSIONS

4.3" w, 4.5" d, 1.7" H  
Weight: 20 ozs

### RECOMMENDED POWER SUPPLY

Universal 100 V -240 V Auto Sensing Input  
24 V DC 3.3 Amps Output  
Power Supply UL / CSA Listed  
Part # NB-PS170

### PLENUM RATED MOUNTING OPTIONS



Pole Mount Plenum Box



Extra Size Plenum Box with Rack Rails



All our Plenum Mounting Options meet NEC, State and UL Requirements



NB-70090	7000 Series 90 Watt 70 / 25 Volt Single/ Dual zone Mono / Stereo Amplifier	List Price \$599.95
NB-PS170	110- 240 V 6.3 Amp DC Power Supply.	List Price \$119.95

Nigel B Design, Inc. California, USA. Tel: (818) 487-9323 Fax: (818) 766-9805  
Web Site: www.nigelbdesign.com E-Mail: sales@nigelbdesign.com

Nigel B.

# 50 WATT MONO 7000 PL SERIES STEREO AMPLIFIER

RS 232 TWO WAY CONTROLLED BY  
CERTIFIED & TESTED BY

MONO / STEREO BALANCED  
OR UNBALANCED INPUT



3 Year Warranty



EACH MADE IN AMERICA AMPLIFIER  
IS INDIVIDUALLY TESTED

Products Proudly



NB-PSU 3.3 Amp Power Supply  
(Required)

## THE AMPLIFIERS SWITCH THEMSELVES ON & OFF AUTOMATICALLY

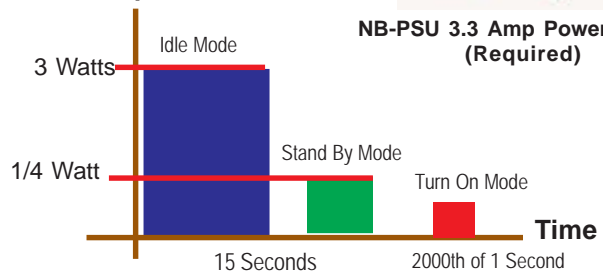
The first thing you will notice is the absence of an On/Off Switch. This is no accident. By incorporating an Automatic On/Off Circuit which we call ADC, the need for a Power Switch becomes unnecessary.

ADC

Our proprietary ADC Circuit allows us to claim our Amplifiers are the most Energy Efficient Amplifiers on the Market.



## Energy Consumption



## OPTIONS THAT DEMONSTRATE THE VERSATILITY OF OUR AMPLIFIERS

The Automatic On/Off function of our Amplifiers allows them to be installed in any "out of the way" places, such as inside our Plenum Equipment Boxes.



1RU Rack Shelf / Frame  
Holds up to 4 Amplifiers



Multi Purpose Brackets  
Mounted on a Projector's Pole



Multi Purpose Bracket also allows our Amplifiers to be Mounted Vertically behind the back of a TV or Monitor

## AMPLIFIER SPECIFICATIONS

50 Watts into 4 Ohms Mono or Stereo  
25 Watts Bridged Mono  
Bridged, Balanced or Unbalanced Inputs  
Optimized to drive Multiple Speakers  
75 Watts Peak Music Power (Both channels)  
Frequency Response: 15 Hz - 22 kHz  
Signal to Noise Ratio: - 65 dB  
Total Harmonic Distortion: .003 dB  
Dynamic Range: 115 dB  
Overload Protection: Built In  
All Screw Connectors

## DIMENSIONS

4.3" w, 4.5" d, 1.7" H  
Weight: 12 ozs

## RECOMMENDED POWER SUPPLY

Universal 100 V -240 V Auto Sensing Input  
24 V DC 3.3 Amps Output UL/CSA Listed  
Part # NB-PSU

## PLENUM RATED MOUNTING OPTIONS



Pole Mount Plenum Box



Full 19" Wide  
with 2RU Rack Rails  
Extra Size Plenum Box  
with Rack Rails

PLENUM RATED

All our Plenum Mounting Options meet  
NEC, State and UL Requirements



CAD DFX DRAWING AVAILABLE

NB-70050PL	70 /25 Volt 50 Watt Amplifier with RS 232 Interface	\$599.95
NB-PSU	110 -240 V Auto Sensing Power Supply 24 v 3.3 Amps DC	\$ 79.95

Nigel B Design, Inc. California, USA. Tel: (818) 487-9323 Fax: (818) 766-9805  
Web Site: www.nigelbdesign.com E-Mail: sales@nigelbdesign.com

**Nigel B.**  
DESIGN

# 90 WATT MONO 7000 PL SERIES STEREO AMPLIFIER

RS 232 TWO WAY CONTROLLED BY  
CERTIFIED & TESTED BY

MONO / STEREO BALANCED  
OR UNBALANCED INPUT



3 Year Warranty



EACH MADE IN AMERICA AMPLIFIER  
IS INDIVIDUALLY TESTED

Products Proudly

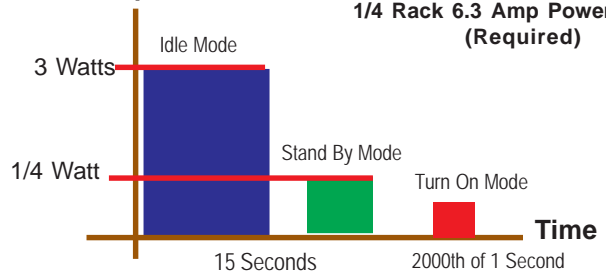


1/4 Rack 6.3 Amp Power Supply  
(Required)

## THE AMPLIFIERS SWITCH THEMSELVES ON & OFF AUTOMATICALLY

The first thing you will notice is the absence of an On/Off Switch. This is no accident. By incorporating an Automatic On/Off Circuit which we call ADC, the need for a Power Switch becomes unnecessary.

## Energy Consumption



Our proprietary **ADC** ADC Circuit allows us to claim our Amplifiers are the most Energy Efficient Amplifiers on the Market



## OPTIONS THAT DEMONSTRATE THE VERSATILITY OF OUR AMPLIFIERS

The Automatic On/Off function of our Amplifiers allows them to be installed in any "out of the way" places, such as inside our Plenum Equipment Boxes.



1RU Rack Shelf / Frame  
Holds up to 4 Amplifiers



Multi Purpose Brackets  
Mounted on a Projector's Pole



Multi Purpose Bracket also allows our Amplifiers to be Mounted Vertically behind the back of a TV or Monitor

## AMPLIFIER SPECIFICATIONS

- 90 Watts into 4 Ohms Mono or Stereo
- 50 Watts Bridged Mono
- Balanced or Unbalanced Inputs
- Optimized to drive Multiple Speakers
- 100 Watts Peak Music Power (Both channels)
- Frequency Response: 15 Hz - 22 kHz
- Signal to Noise Ratio: - 65 dB
- Total Harmonic Distortion: .003 dB
- Dynamic Range: 115 dB
- Overload Protection: Built In
- All Screw Connectors

## DIMENSIONS

4.3" w, 6.75" d, 1.7" H  
Weight: 20 ozs

## RECOMMENDED POWER SUPPLY

Universal 100 V -240 V Auto Sensing Input  
24 V DC 6.3 Amps Output UL/CSA Listed

Part # NB-PS170

## PLENUM RATED MOUNTING OPTIONS



Pole Mount Plenum Box



Full 19" Wide  
with 2RU Rack Rails  
Extra Size Plenum Box  
with Rack Rails

**PLENUM RATED**

All our Plenum Mounting Options meet  
NEC, State and UL Requirements

NB-70090PL	70 /25 Volt 90 Watt Amplifier with RS 232 Interface	\$699.95
NB-PS170	110 -240 V Auto Sensing Power Supply 24 v 6.3 Amps DC	\$119.95



CAD DFX DRAWING AVAILABLE

Nigel B Design, Inc. California, USA. Tel: (818) 487-9323 Fax: (818) 766-9805

Web Site: [www.nigelbdesign.com](http://www.nigelbdesign.com) E-Mail: [sales@nigelbdesign.com](mailto:sales@nigelbdesign.com)



# **LOCKING PROJECTOR ENCLOSURES**

## **A Series of Enclosures designed to Protect Projectors up to 13" wide 11" deep and 5" high in size**

(A unit for Larger Projectors has an expected delivery date early 2011)

Currently there are three Versions: Flush Ceiling, Pole Mount and Portable, each provides levels of Protection no other Enclosure Offers - Regardless of Price or Manufacturer

A Radical new approach that overcomes the short comings of all Projector Enclosures

### **THE PROJECTOR SITS ON ANTI-VIBRATION MOUNTS**

In all Locking Projector Enclosures, the Projector is attached to Anti-Vibration Pads to help reduce Minor Vibrations. When Vibrations are more severe and has to be Isolated, the use of our **Isolation Anti Vibration Mounts** is recommended.

The incorporation of our new **Pole Isolation Mounts** can also be used with any Projector - regardless of Make or Model. Order by Part #s NB-UIM-PM or NB-UIM-WB. (See separate leaflet "Isolation Mounts").



NB-LPE-1W with  
Locking Hinged Door



**Locking Projector Enclosure mounted  
flush with the Ceiling Tiles**

### **ALL CABLES & POWER WIRING ARE TOTALLY CONCEALED**

In all cases Cables and Wiring are hidden from view. When it becomes necessary to service the Equipment, a Service Person responsible will find it very easy to access everything located inside.

### **THE LOCKING PROJECTOR ENCLOSURES FROM NIGEL B DESIGN**

Better looking units was just the beginning - the design brief requested by many Installers was to overcome the Security shortcomings of ALL "Cage" type Units. While some units look strong, their weakness in all instances is the Pole Mounting itself, which a thief can cut with a Sawzall® and remove the entire assembly within 30 seconds.

While the units on the right looks strong, any thief can walk away with the entire assembly including the Projector in less than a minute.



While we offer a Pole Mount Version that installs below the Ceiling Tiles, we do so when the Screen Position or necessity requires that the installation make it the only option.

### **UNIVERSAL PROJECTOR MOUNTING**

Nigel B 's Design uses a **Built in Universal Projector Mount** that accomodates most popular Projectors. (see next page)



The Pole Mounted Enclosure installed  
below the Ceiling Tiles

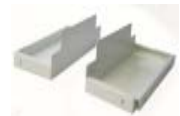


Our Portable Version can be carried from  
Room to Room or Fixed to any Flat Surface  
and secured for more Permanent Installations

**Please turn over for additional information**

**MANY INSTALLATION ACCESSORY OPTIONS INCLUDING OUT NEW ISOLATION MOUNTS**

- Isolation Mounts for both Cable & Pole Applications
- Std. Plenum Equipment Box
- Extra Size Plenum Equipment Box with 2 RU Rack Rails
- Ceiling Tile Supports For all Plenum Equipment Boxes
- Nigel B Design Amplifiers
- The Limpet Security Alarm
- Many AMX® and Crestron® Controllers



Ceiling Tile Supports



Linking Kit



Isolation Mount for both Cable & Pole Mount Applications



Plenum Equipment Box Ceiling Tile Supports & Linking Kit attached to the Projector Enclosure



Nigel B Design Amplifiers



Std. Plenum Equipment Box



Extra Size Plenum Equipment Box with 2RU Rack Rails

**PROJECTOR ANGLE ADJUSTS FROM 0 TO 15 DEGREES**

The Projector Angle can be instantly adjusted from 0 -15 Degrees without tools



0 Degree Setting



15 Degree Setting

The Universal Projector Mount is infinitely adjustable to accommodate almost any Projector.



Moveable Mounting Brackets allow almost any Projector to be mounted

**BUILT IN POWER**

The Built In Power Supply powers everything installed inside.

**ADD AN AMX® OR CRESTRON CONTROL UNIT**

Space to incorporate a small AMX® or Crestron® Control Unit.

• Built in Power Receptical



**ADDITIONAL THEFT PREVENTION DEVICE**

Our Limpet Security Alarm, when fitted, can provide remote monitoring and reporting to any designated Cell Phone, Central Monitoring Station or Telephone in the event a thief attempts to remove the Equipment.



Optional Limpet Security Alarm

**NIGEL B DESIGN LOCKING PROJECTOR ENCLOSURES SPECIFICATIONS**

Maximum Projector Size: 13" Wide, 11" Deep, 5" High

Locking Projector Enclosure: 15" Wide, 15" Deep, 8" High. Weight: 13 lbs



Download DWG and PDF Data  
Click on CAD Files Button

NB-LPE-1W	Locking Projector Enclosure for Projectors up to 13" Wide	\$429.95
NB-LPEB-1W	Portable Locking Projector Enclosure for Projectors up to 13" Wide	\$449.95
NB-UIM-PM	Isolation Mount for any Pole Mounted Projector regardless of Make	\$199.95
NB-UIM-WB	Isolation Mount for any Cable Hung Projector regardless of Make	\$199.95
NB-LKPB	Linking Kit, Projector LockBox for Std & Extra Large Plenum Equipment Boxes	\$ 59.95
NB-CTSSPB	Pr. Ceiling Tile Supports for Standard Plenum Equipment Box with NB-PLHK-5 Hanging Kit	\$149.95
NB-CTSELB	Pr. Ceiling Tile Supports for Extra Large Plenum Equipment Box with NB-PLHK-5 Hanging Kit	\$129.95
NB-2LSAS	Limpet Mk2 Electronic Security Alarm	\$ 179.95

Products Proudly



**Nigel B Design, Inc. CA USA. Tel: (818) 487-9323 Fax: (818) 766-9805  
Web Site: www.nigelbdesign.com. E-Mail: sales@nigelbdesign.com**



# ISOLATION MOUNTS FOR MANY APPLICATIONS

A POLE OR CABLE MOUNTED SOLUTION THAT EASILY AND EFFECTIVELY ISOLATES & PROTECTS PROJECTORS OR OTHER SENSITIVE EQUIPMENT FROM VIBRATIONS GENERATED FROM AN EXTERNAL SOURCE

Perfect for for both new or Retro-fit Applications



Hanging Kit



Four Cable Mounting Holes are provided on both Top and Bottom Plates



A Surveillance Camera Solution (Custom Mounting Plates Available to Special Order)



Projector Solutions

There are many different kinds of Isolation Mounts. The ones we use are specially designed for Hanging Applications

Each Mount consists of four specially Engineered Isolation Elements held under tension and sandwiched between two plates to absorb Energy caused by the Vibration. The Plates are predrilled to accept any of our Hanging Kits should the installation require the Equipment being Isolated to be installed this way.

### HOW THEY WORK

Each unit is calibrated to each system's requirements. Absorbing the source of Vibration is achieved using Specially Engineered Rubber Compound Elements measured in Durometers. The higher the Durometer number the more weight that can be carried. This figure is then calculated in relation to the Total Weight of the Equipment. It is important therefore, when ordering an Isolation Mount, to provide us with the actual weight of everything below the Mount itself, to ensure the proper Assembly is supplied.

### A SIMPLE AND EASILY INSTALLED SOLUTION USING EITHER A POLE OR CABLE SYSTEM

The Pole Mount Version is easily installed and is recommended for use with Projectors. In this configuration, the Isolation Mount is placed anywhere between two lengths of ordinary 1 1/2" diameter Projector Pipe. Provision is provided allowing the Cable Hanging Kit to be used. In some cases when using the Cable Solution, it may be necessary to use additional Steadying support, but this will only be evident during the installation process.

### PRINCIPALS OF VIBRATION ISOLATION

The isolating Elements act as a Time Delay and a temporary storage of Energy which evens out the force of motion disturbance on one side of the Vibration Mount and transmits it properly as a lesser disturbance to the bottom Plate. In addition to its function as a Time Delay and temporary Energy Storage, the Mounts also function as an Energy Dissipater or Absorber.

### DUROMETER RATING

Durometer is the International Measuring Standard of rubber and similar materials. The elasticity and hardness (Durometer) rating for example, of 60 would be classified as Medium Soft and 85 Hard. A typical small Projector on a Pole would use a Vibration Mount with a Durometer Rating of 60.

Dimensions: 4" x 4" x 4" high  
Weight: 4.5 lbs

Part #	Description	List Price
NB-UIM-PM	Isolation Mount (Pole Mount Version)	\$199.95
NB-UIM-B	Isolation Mount (Cable Mount Version)	\$199.95
NB-PLHK	5' Hanging Kit	\$ 79.95

Products Proudly



Nigel B Design, Inc. CA USA. Tel: (818) 487-9323 Fax: (818) 766-9805  
Web Site: [www.nigelbdesign.com](http://www.nigelbdesign.com) E-Mail: [sales@nigelbdesign.com](mailto:sales@nigelbdesign.com)



# STANDARD PLENUM RATED EQUIPMENT BOXES

Meeting NEC & UL 2043 Code Requirements for the Installation of Equipment and Power in the Plenum or Ceiling Space

## DESIGN

It's 14" x 14" and almost 5" high allow many different types and sizes of equipment to be installed inside its extremely Strong Aluminum Interior. For example, some of the many products from Companies such as Crestron®, AMX®, Altec Lansing Commstar®, Extron® and all Nigel B Products etc, have been Installation Tested



### HEAVY DUTY POLE MOUNT BRACKET

The Heavy Duty NB-PEBPM Pole Mount used in the Pole Mount Version of the Plenum Box has been engineered to take weights in excess of 150 lbs.

### FLAT SURFACE/HANGING MOUNT

The NB-PLWB comes with a Flat Surface/Wall Mount, allowing the Plenum Equipment Box to be attached to any Flat Surface or Suspended using our NB-PLHK Hanging Kits, which are UL/CSA rated to 100 lbs.

### THE PLENUM EQUIPMENT BOX

The Box itself is not load restricted. All the weight is carried by the suspension method used (Pole or Cables). Made from .060" Aircraft Grade Aluminum it will safely hold 50 lbs of installed Equipment.



1 1/2" Heavy Duty Pole Mount is engineered to hold approx 150 lbs



Flat Surface or Wall Mount

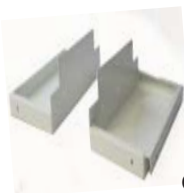
NB-PLHK  
Optional Hanging Kit  
is UL & CSA Listed



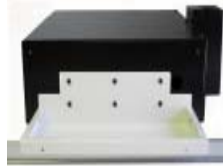
## USING OUR NEW CEILING TILE SUPPORT BRACKETS

- Eliminates the need for a separate Ceiling Tile Kit
- Reduces costs by reducing installation time

The Ceiling Tile Supports, when attached to our Plenum Equipment Boxes, eliminates the need for a separate Ceiling Tile Kit. Fixing the Support Brackets to the Plenum Equipment Box, is a simple matter of screwing six screws. The entire assembly then sits on the Ceiling Tile Grids. For additional support the Installer should attach the supplied Hanging Kit Cables to either the Plenum Equipment Box itself or directly to the Supports.



Ceiling Tile Supports



Plenum Equipment Box shown fitted with Supports sitting on Grid Frame

Model NB-PLWB  
Plenum Equipment Box  
with Flat Surface Mount  
attached

## WIRING AND CABLE ENTRY

More than enough Wiring and Cable Entry and Exits Ports are provided. For the Pole Mount Version, most Cables are run inside the Pole. In addition 1 Port is for Power and an additional one is available for other uses. For the Flat Surface Mount/Hanging version, one is used for Power and two additional ports are available for connection to additional 1/2" conduits.



Power Outlet  
Built In  
(see Over)

Pole Mounted Plenum Box

Need more outlets for your equipment?  
(see solutions on next page)



Cover is easily removed  
for access at any time

Interior Views  
showing some  
equipment installed



Power Outlet  
Built In  
(see Over)

Flat Surface/Hanging Plenum Box

## COOLING THE INSTALLED EQUIPMENT

We use Conventional Cooling Methods for cooling. The Pole Mount version allows air intake through the bottom of the Pole and exhausts any warm air from the Plenum Box through the top of the pole. Slots in the top and bottom of the Flat Surface Mount allow air to pass through the unit. This we call the Chimney Effect which allows the inside of the Plenum Box to remain cool.

Please turn over for Pricing and other Information

In order to meet NEC and State Code regulations, it is important to understand the main parts of the Code that regulate how equipment and wiring can be installed in a Plenum or Ceiling Space.

NEC ARTICLE 400-8 and 400-8(5).....page 219 of the code states: That Flexible Cords and Cables are not permitted to be run through Walls, Structural ceilings, Suspended Ceilings, or Dropped Ceilings. In addition the revision to 400-8 specifically prohibits these cords being used without being properly enclosed. Regulations also prohibits the Installation of open Power Outlets in these spaces.

**Our Plenum Box encloses all Wiring and Cables including the Power Recepticle meeting all NEC Code Requirements**

To Ceiling Speakers



Pole Mount Installation

The Supplied Power Outlet is



installed **Inside** all Plenum Boxes to meet NEC Code Requirements

Need more outlets for your equipment?



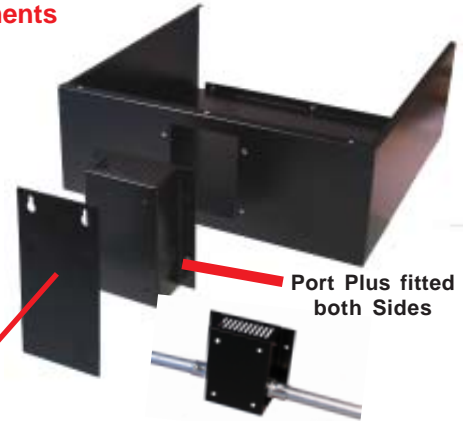
Simply add one or two 3 Outlet Taps or a Power Strip to the receptacle inside

Using the supplied Flat Plate allows the Plenum Box to be fixed to any Flat Surface



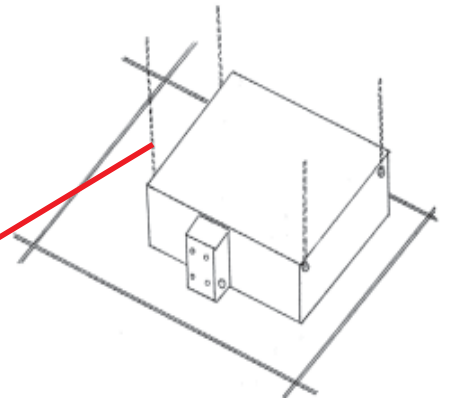
Eye Bolts are attached to each corner of the Plenum Box

The Hanging Kit is UL & CSA Listed and is rated with a safe working load of 100 lbs



Port Plus fitted both Sides

By removing the supplied Port Plugs, standard 1/2" Conduit can be used to provide Cable Entry & Exit Points



Hanging Plenum Box Installation

**CONTROLLING NIGEL B AMPLIFIERS**

Our Standard Amplifiers are usually controlled using the Projector's Remote, our Plus Series Amplifiers have an RS 232 Port, enabling them to be controlled by an AMX® or Crestron® or similar Touch Screen

**IF YOU NEED TO INSTALL THE PLENUM EQUIPMENT BOX BELOW THE CEILING TILES**

Because the Pole Mounted Plenum Box uses standard 1 1/2" Pipe fittings, the equipment box can be attached to the Projector's Pole

**SPECIFICATIONS**

Interior Dimensions: 14" x 14" x 4.75 High. Weight: 5 lbs



Click on CAD Button on Main Screen to Download CAD images in both DWG and pdf Formats

Part #	Description	List Price
NB-PEBPM	14" x 14" Plenum Equipment Box with Pole Mount	\$ 299.95
NB-PLWB	14" x 14" Plenum Equipment Box with Flat Surface Mounting Box	\$ 299.95
NB-PLHK	Hanging Kit with all Hardware for Flat Surface Mounting Box	\$ 79.95
NB-CTSSPB	Pair Ceiling Tile Supports with NB-PLHK-5 Hanging Kit	149.95



# EXTRA LARGE LOCKING PLENUM BOX

## FITTED WITH 2 RU RACK RAILS

MEETS UL® 1043 NEC & STATE BUILDING CODE REQUIREMENTS

CAN BE SUPPLIED POLE MOUNTED, AS A HANGING VERSION OR INTEGRATED INTO A CEILING TILE KIT SYSTEM



Pole Mount Version



Can be used with a Ceiling Tile Kit System



Hanging Version Using the Hanging Kit



**BUILDING CODE REQUIREMENTS**  
Power is brought in through Metal Conduit to the Internal AC Receptacle

**GENEROUS INTERNAL DIMENSIONS** 19" x 14" x 4 3/4" high

The two Rack Rails supplied with the Unit can be removed if the Equipment being Installed doesn't require Rack Mounting.

### OPTIONAL AIR VENTILATION KIT

Vent Blanking Plates are fitted when the Ventilation Kit is not used



Optional Air Vent Kit  
Extracts Internal Air to below the Ceiling Tiles

Under most circumstances the ventilation kit will not be necessary, but heat drawn off from the installed Equipment is a concern we recommend that temperature readings are made. If the Temperature is determined to be over 110 degrees, you may find all that is required is **The Air Ventilation Kit**, The kit comprises of two Vent Ceiling Tile Fittings connected by two lengths of Flexible **Fire Proof** Aluminum Tubes that can be cut or stretched to 36".

### EXTERNAL DIMENSIONS

20." w, 14" d, 5" h. Weight 9 lbs



CAD Drawings created in AutoCAD can be downloaded from our web site for incorporation into your own design layout.

Part #	Description	List Price
NB-2RUPB	Extra Large Hanging Plenum Box, fitted with 2 R2U Rack Rails	\$399.95
NB- PLHK-5	* 5' Hanging Kit * for Extra Large Plenum Box	\$ 79.95
NB-2RUPM	Extra Large Pole Mount Plenum Box fitted with 2 2RU Rack Rails	\$399.95
NB-AVK	Air Ventilation Kit (Can be fitted to either Units)	\$ 99.95

\*15' Long Hanging Kits are available at the same Price on request

**Nigel B Design, Inc, 4163 St Clair Ave, Studio City, CA 91604**  
Tel: (818) 487-9323 • Fax: (818) 766-9805 • Web: [www.nigelbdesign.com](http://www.nigelbdesign.com)



# MULTI PURPOSE MOUNTING BRACKETS

The Multi Purpose Brackets can be used on any Flat Surface, any Projector Pole, even behind TV Display Monitors making it easy to Mount any of our Amplifiers.

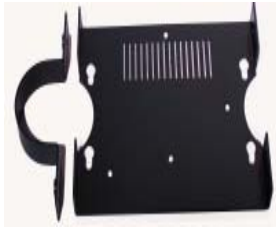
(also perfect for the smaller   Controllers)

Products Proudly



## INSTALLING OUR AMPLIFIERS

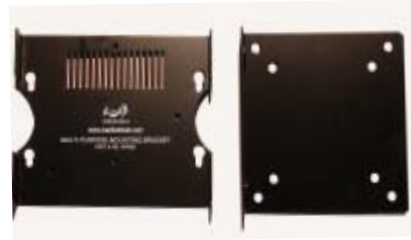
It's simple to install any of our Amplifiers on any Projector Pole or Flat Surface. It's also just as simple when using either VESA Plates and the Multipurpose Bracket to attach any of our Amplifiers on to the Back of a TV Display Monitor. In the case of a TV Monitor the entire assembly adds less than 2" to the depth.



NB - MPB-P  
The Multi Purpose Bracket Pole Mount Version



NB-MPB-P Single Pole Mount Bracket attached to a Projector's 1 1/2" Pole



NB-MPB Multi Purpose Bracket used with a VESA Mounting Bracket Predrilled for 75 or 100 mm Mounting Holes Part # NB-V1



NB-MPB Multi Purpose Bracket for Mounting our Amplifiers on any Flat Surface or Structured Wiring Panels



2 NB-MPB-P Brackets joined together when used on a 1 1/2" Pole (Shown with NB-JK Joining Kit)



VESA Mounting Plate Predrilled for 150mm and 200 mm Mounting Holes Part # NB-V2



2 NB-MPB Brackets joined together when used on any Flat Surface



The Multi Purpose Bracket used with a VESA Plate attached to the back of a TV or Monitor for vertically mounting any of our Amplifiers



NB-MPB-P	Multi Purpose Bracket Pole Mount Version	\$ 89.95
NB-MP-JK	Joining Hardware when attaching two Brackets together (Pole or Flat Surface Bracket)	\$ 15.95
NB-MPB	Multi Purpose Bracket for Flat Surfaces or when joining two Brackets together you will need NB-MP-JK	\$ 79.95
NB-V1	VESA 75 mm / 100 mm Plate	\$ 59.95
NB-V2	VESA 150 mm / 200 mm Plate	\$ 69.95
NB-MPP	Multi Purpose Bracket for either size VESA Plate	\$ 79.95



# THE LIMPET Mk2

**The Only Electronic Device that will Protect your Equipment without Compromise 24/7**

**Flat Panel TV or Monitor, Projector or any Portable Equipment**

**ONLY THE LIMPET CAN GIVE YOU THESE BENEFITS**

- 9 Year Operation without changing the Battery
- 10 Year LI Iron Battery
- Visible Battery Check at any time
- Only the 1 1/2" Keep is attached to the Device
- The Limpet is permanently attached to part of the Building so it can't easily be removed and can be hidden from view
- 117 Db Siren (Can be disarmed when the user only requires Silent Reporting)
- Can be connected to other External Devices Such as a Central Alarm or Controller for Reporting an intrusion or attempted theft etc.



10 Year Battery Guaranteed

The 1 1/2" Square Tuffened Hardened Steel Cable Keep



is the only part that is Bonded to the Device being protected.

Spare Keeps are available on request

In case the Equipment needs to be Serviced or Replaced, the Keep is the only item that has to be replaced



Using the Limpet's NO or NC Contact Closure Outlets allows connection to Devices such as:



Using any of these Devices allows the Limpet to report any attempted Theft, even when your'e not there

**The Limpet uses Tamper Proof Screws to protect the interior and the Unique Arming / Disarming Key cannot be obtained from any Hardware Store or Locksmith, ensuring total protection from any unauthorized tampering**

Loop Wire if cut, alerts intrusion

NO or NC Contact Closure Wire if cut, alerts user of Intrusion

Arming Key

Battery Test Button and LED

Part #	Description	List Price
NB-2LSAS	Mk2 Limpet Security Device with 117 dB Alarm, NO, NC Contact Closure Connection to any Reporting Device	\$ 179.95

**NO PRESENT SECURITY DEVICE PROTECTS YOUR EQUIPMENT BETTER THAN THE LIMPET**

Cages, Pole Mounted Devices with Tamper Proof Fittings used to protect Projectors can be all be defeated within seconds by using a Sawzall to cut the Pipe. The thief can walk off with the Cage and Projector all without being detected. For Flat Panel Displays Displays, until the Limpet came along, there was no effective fool Proof protection available. **NOW YOU CAN USE THE LIMPET WITH CONFIDENCE- EVEN WITH PORTABLE EQUIPMENT that might usually sit on a Desk or be left unattended.**

**NOT EVEN THE SONIC SHOCK DEVICE COMES CLOSE**

Although fitted with loud Sirens, it offers almost no protection as the Alarm can be defeated INSTANTLY by spraying Shaving Foam though the Siren's Grill or covering it with Sticking Plaster.

- Easily Defeated
- Requires that the Device is permanently attached to the Projector or Display Device, so removal is imposible
- When Servicing or Replacement of the Equipment is required, the Sonic Shock stays with the Equipment
- Uses a Standard 4 Year Shelf Life Battery
- Limited Operation without changing the Battery
- No Visible Battery Check (can you be assured the Device is working)
- No Connection is provided to any External Warning / Reporting Device



Band-Aid® Sticking Plaster



**No Alkaline Battery Manufacturer guarantees a Shelf Life more than 4 Years**

Spare Keys can be easily obtained from any Hardware Store or Locksmith making theft very easy





## **REPORT & FINDINGS OF THE DIFFERENT METHODS OF PROTECTING EQUIPMENT & PROJECTORS FROM THEFT**

In order to accurately report on the different Products Evaluated, samples of each were obtained. While this might not cover every product made, it clearly shows that the Limpet offers the best protection - regardless of cost.

**Date of Report: June 1st 2007**

### **THE LIMPET™ ELECTRONIC ALARM - Advantages**

1. Battery Life about 9 plus years, Internal Siren will sound for up to 30 hours.
2. Simple & Quick to Set Up.
3. **The Alarm is triggered Instantly it is tampered with, making it impossible to Defeat.**
4. Breaking or Jumpering the Loop Wire activates both the Internal 117 dB Siren, and any connected External Alarm Devices, (see #6 below).
5. In addition to its Built In Internal Siren, the Limpet has NO or NC connections that can be used with any External Alarm Device.
6. External Alarm Wires **Cannot be Cut, Removed or Jumpered, as this still Activates the Internal & all External Alarm Devices Used.**
7. Can use all the Reporting Functions of any AMX® or Crestron® Control Systems using their NO or NC Connections.
8. Can be Screwed or Bolted, in addition to Glueing the Limpet to the Equipment it is protecting.
9. All Bolts or Screws are concealed inside the Limpet.
10. The Bolting Method allows the Limpet to be removed by the Installer when the Equipment itself has to be Replaced or Serviced.
11. Access to the Inside is protected using Tamper Proof Screws which also Secures the Case when it's Closed.
12. Superior Electronic Construction using Surface Mounted Components where applicable, for increased Reliability.
13. Light Weight Heavy Duty Aluminum Case.
14. Fully Customizable by an Installer allows the Limpet to be configured based on the actual installation requirements.
15. Comes Complete with two Keys, Additional Keys can only be obtained from Nigel B, they cannot be Purchased or Duplicated from any Store.
16. Many other uses - Perfect for any Product or Equipment.
17. Competitive Price - Proudly Made in the USA.
18. 3 YEAR WARRANTY

### **THE LIMPET™ - Disadvantages**

**None Found**

### **THE SONIC ALARM 3 - Advantages**

1. Low Cost.
2. Cheaply made for those people looking to spend little who end up getting little for their money.

### **THE SONIC ALARM 3 - Disadvantages**

1. Poor Battery Life, Frequent Battery Change expenses can easily exceed its original cost, making it overall more expensive than the Limpet.
2. Impossible to replace Battery without damaging the Case rendering the Unit useless.
3. **Limited Protection Capabilities.**
4. Poorly Constructed Heavy Case.
5. Short Alarm Life, maximum of 2 hours.
6. Cheap Components used throughout.
7. Easily Defeated, Key easily obtained and Duplicated at any Hardware Store.
8. No provision to customize unit.
9. Made Off Shore.
10. One Year Warranty

### **STANDARD PROJECTOR MOUNTS - Advantages**

**None Found**

### **STANDARD PROJECTOR MOUNTS - Disadvantages**

1. No Warning Alarm Fitted
2. Very Easy to Steal the Projectors without the Theft being Detected.

### **PROJECTOR CAGES - Advantages**

1. Provides Limited Protection on all units we evaluated.

### **PROJECTOR CAGES - Disadvantages**

1. Easily Defeated - a quick Saw Cut of the mounting Pipe with a Sawzall and the Thief walks away with the Equipment, undetected.
2. No Detection System seen on the units we evaluated.
3. No Audible Warning that the Projector is being Tampered with.
4. Some Cages can cause some Projectors to Overheat.
5. Most Cages are either ugly or their looks are not in keeping with their Surroundings.

### **MONITOR MOUNTS**

1. In all the Monitor Mounts we looked at, none provided any Theft Protection Device.
2. The Ability to provide protection was limited, whereas using the Limpet Alarm could be used very effectively.

**Conclusion: In Comparing the different Methods and Products used to provide Theft Protection, it became obvious that the Limpet™ Alarm offered the best Security and the most versatility in Protecting not just Projectors and Monitors, but many other types of Equipment.**

**Nigel B Design, Inc. California, USA. Tel: (818) 487-9323 Fax: (818) 766-9805  
Web Site: [www.nigelbdesign.com](http://www.nigelbdesign.com). E-Mail: [sales@nigelbdesign.com](mailto:sales@nigelbdesign.com)**



# 6000 SERIES SINGLE / MULTI ZONE 50 & 90 WATT AMPLIFIERS

Products Proudly

WITH BUILT IN IP MASTER GATEWAY CONTROLLER



Digitally Controlled Two Way Ethernet, USB and Contact Closure Modes

With Voice Lift Amplification

Emergency Announcements, Paging, Zone to Zone or Global 2 way Connection, Streaming Audio over the Network are just some of their capabilities

Engineered to be used individually, or used in Multiple Zone Applications

Measuring 4.3" x 4.3" x 1.75" weighing less than 1 lb, these are more than just Miniature Amplifiers. They comprise of a very powerful Gateway Controller allowing the User to configure the units for any Installation.



ADC

Automatic ON/OFF Circuit eliminates the need for an ON/OFF Switch  
No Operator involvement required



Power Indicator

Headphone Connection

Programming / Upgrade Port

Microphone Input for Voice Amplification or Connection to any Wireless Microphone System

Host USB Port for:  
Wi-Fi Connections  
Blue Tooth Devices  
Any PDA with Internet Access  
Hubs and Thumb Drives

## APPLICATIONS AND USES

Any number of individual Zones can be set up over any standard Cat 5 Network

- Hospitals
- Schools and Universities
- Conference and Training Rooms
- Hotels
- Offices
- Large and Small Stores

The Built in Set Up Screen (shown on the right), allows the installer to set up the Controller to suit individual Applications.



## AUDIO EQUILIZATION

Audio EQ is fully supported using different Pre-Set configurations we call Operating Environments.

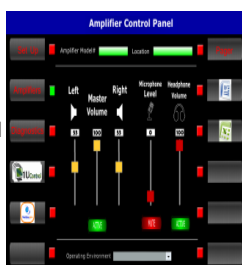
## REMOTE OPERATION & DIAGNOSTICS OVER THE INTERNET USING ANY BROWSER

The Amplifier stores all its Control Software as HTML Pages internally, allowing Users to access the Amplifier from anywhere in the world, using any Browser. This means Users can not only have complete Control of the Amplifier, but can also carry out Diagnostics from any remote location.

Adjustment of the different Setting can be changed at any time remotely or locally from any PDA or Computer.

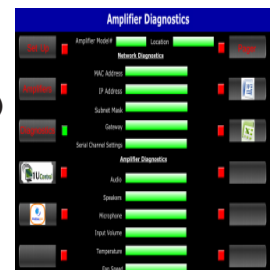
## SAMPLE CONTROL AND DIAGNOSTIC SCREENS

- Location Set up
- Left & Right Channel
- Balance
- Ganged Left & Right Channel
- Mute On/Off Toggle
- Microphone Level
- Tone or Ambiance Level
- Headphone Level



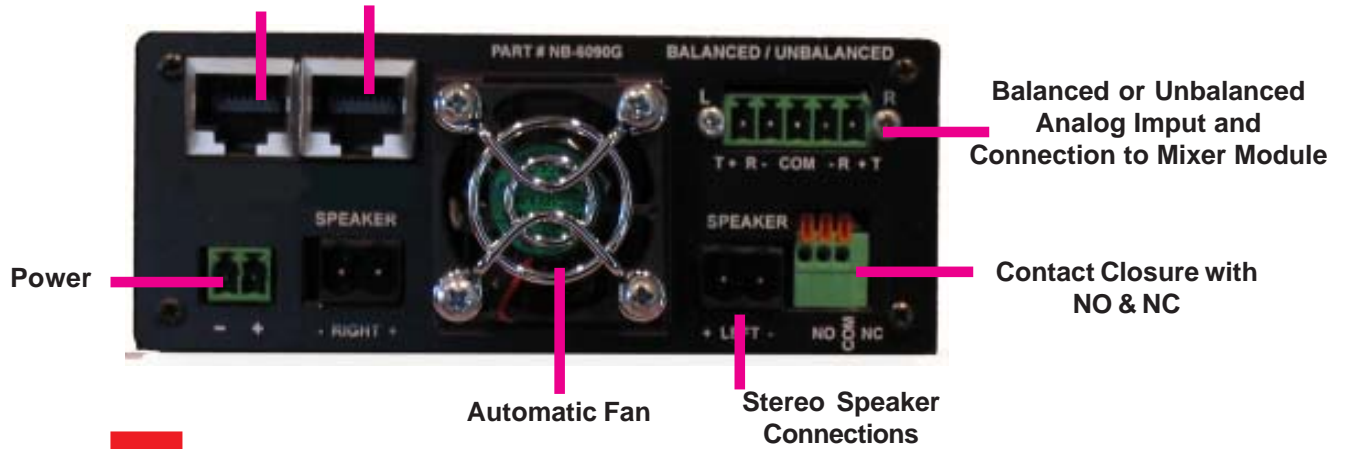
- Audio Detection
- Speaker Detection
- Software Settings (MAC, IP, Network Configuration)
- Temperature
- Fan Speed
- Power Condition

[These features can reduce unnecessary Service Calls](#)



Turn over for more information

## Dual Ethernet Ports with internal Switching



Our proprietary **ADC** Circuit allows us to claim our Amplifiers are the most Energy Efficient Amplifiers on the Market

### USB HOST PORT

The USB Port allows connection to multitude USB Devices:

- USB Hubs
- USB to Wi- Fi Adapters
- USB Bluetooth Dongles

One such use of a Bluetooth Dongle is the Direct connection of any I Phone® or Smartphone without the need for any "App", using any Browser provides direct access and operation of the Controller's Built-In Web Pages.

### USB PROGRAMMING /UPGRADE PORT

This is provided to allow the User to Upgrade The Controller's Capabilities at any time.

### TWO WAY SELECTIVE OR GLOBAL PAGING & TELEPHONE FUNCTIONS (An Extra Cost Option)

The Series 6000 are perfect for Schools, Hospitals and Offices where Emergency Announcements or Individual Paging can easily be made, but there are many other Applications where these would be useful additions to any facility. As the Amplifier's Controller uses Web Pages, the Unit can also be used as a Voice Over the Internet Phone to Make and Receive calls.

### CONTACT CLOSURE CONNECTION

The Contact Closure connection provides two way for both NC and NO Operation, allowing the Amplifier to both receive or send commands. A typical example could be a Museum Application which when connected to a Motion Detector, would allow the Amplifier to turn on and play information of an exhibit, or the Amplifier could be used to access another device.

### AMPLIFIER SPECIFICATIONS

#### 50 Watt Version

50 Watts 4 Ohm Mono or Stereo  
 25 Watts per Channel Stereo  
 or 50 Watts Bridged Mono  
 Bridged, Balanced or Unbalanced Inputs  
 Optimized to drive Multiple Speakers  
 75 Watts Peak Music Power  
 Frequency Response: 15 Hz - 22 kHz  
 Signal to Noise Ratio: - 65 dB  
 Total Harmonic Distortion: .003 dB  
 Dynamic Range: 115 dB  
 Overload Protection: Built In  
 All Screw Connectors

#### DIMENSIONS

4.3" w, 4.5" d, 1.7" H  
 Weight: 1lb.

#### RECOMMENDED POWER SUPPLY

Universal 100 V -240 V Auto Sensing  
 24 V DC 3.3 Amps Output

#### 90 Watt Version

90 Watts 2 Ohm Mono or Stereo  
 45 Watts per Channel Stereo  
 or 90 Watts Bridged Mono  
 Bridged, Balanced or Unbalanced Inputs  
 Optimized to drive Multiple Speakers  
 100 Watts Peak Music Power  
 Frequency Response: 15 Hz - 22 kHz  
 Signal to Noise Ratio: - 65 dB  
 Total Harmonic Distortion: .003 dB  
 Dynamic Range: 115 dB  
 Overload Protection: Built In  
 All Screw Connectors

#### DIMENSIONS

4.3" w, 4.5" d, 1.7" H  
 Weight:1 lb.

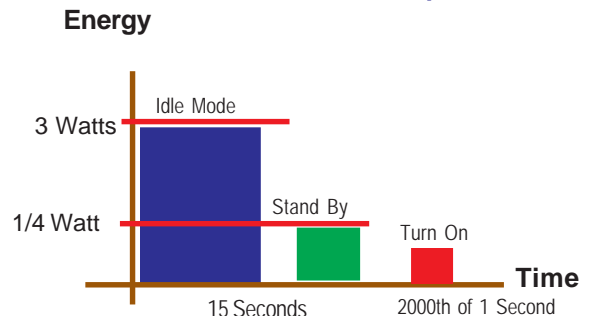
#### RECOMMENDED POWER SUPPLY

Universal 100 V -240 V Auto Sensing  
 24 V DC 6.3 Amps Output

Power Supplies UL / CSA Listed



At least 4 Times more Energy Efficient than our nearest Competitor



This leaflet has been prepared as "Advanced Information only. The Release Date and a complete specification will be published late March 2011.

**Nigel B Design, Inc. California, USA. Tel: (818) 487-9323 Fax: (818) 766-9805**  
**Web Site: www.nigelbdesign.com E-Mail: sales@nigelbdesign.com**